

SIXTH FORM PROSPECTUS

Course Guide 2022



SKEGNESS
ACADEMY

Together we achieve the extraordinary!

Contents

Sixth Form Course Guide

Overview

For further information, please contact Miss K Langdale, Head of Sixth Form klangdale@skegnessacademy.org

Contents	2
Introduction	3
Entry Requirements	4
Subject informaton	
BTEC National Extended Certificate Applied Law	5
BTEC National Extended Certificate in Applied Science	6
BTEC National Diploma Art and Design	7
BTEC National Extended Certificate Art and Design	8
BTEC National Diploma in Children’s Play, Learning and development (CPLD)	9
A-Level English Literature	10
A-Level Geography	11
Cambridge Technical Extended Certificate in Health and Social Care	12
BTEC National Extended Certificate Information Technology	13
BTEC National Diploma Performing Arts	14
BTEC National Extended Certificate Performing Arts	15
A Level Sociology	16
Cambridge Technical Diploma in Sport and Physical Activity	17
Cambridge Technical Extended Certificate in Sport and Physical Activity	18

Introduction

Sixth Form Course Guide

Making the right choices needs careful thought and discussion. We encourage all students to consider the following when they are selecting their courses.

Choose subjects you have enjoyed and have succeeded in
Check the courses cover topics you will enjoy
Check courses have the right balance of coursework and examination that suit your preferred learning style
Check courses will prepare you for your preferred university/career
Discuss choices with the subject teacher, Head of Faculty and/or Head of Sixth Form

What subjects do you enjoy?

Enjoying a subject will support you in achieving the best possible grades for your future. When deciding on the courses you wish to take, think about why you are choosing it. Don't base it on your friends and what they have chosen or external pressures you might have. Picking courses because of these will mean you are unlikely to enjoy learning or complete the necessary work. This will impact your confidence and finally your overall grades. You also need to consider you might not like a course until you have tried it, to minimise this, find out as much information as you can on a course.

What am I good at?

When deciding on the courses you want to take during your time at Sixth Form, your engagement with the subject needs to be matched by your skill and ability for it too. Before you make a decision, be sure you have the right skills, or you'll struggle with the demands of the course. The best people to advise you are the teachers who know you and your abilities, along with your predicted grades, which are a good indication of where your abilities lie.

Which subject do I need for my future?

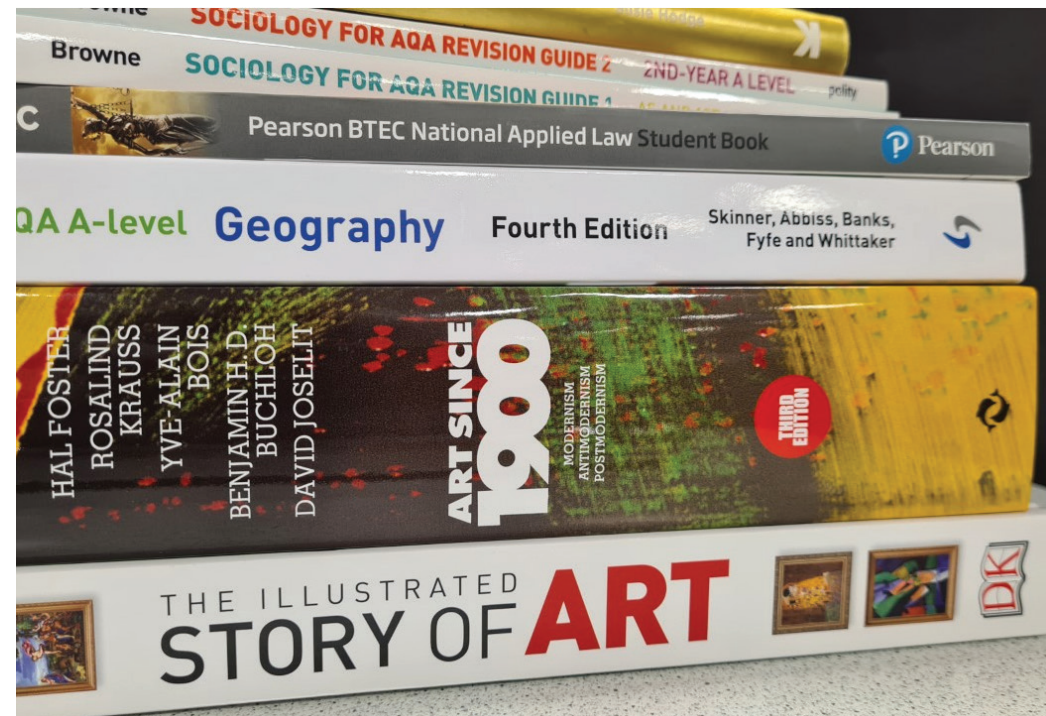
The subjects you take in Sixth Form will also support your future. Whether you are considering a degree, apprenticeship or employment after Sixth Form, what are the entry requirements for these and are the subjects you plan to do enough to get you there? Even in employment a certain level of education will be required so make sure you have done your research and know what is expected of you and your achievements.

Courses available in Sixth Form

There are three different types of course offered:
A-level courses
Vocational courses
GCSE resit courses (English and Mathematics only)

Students who have not been successful at meeting the entry requirements for level 3 courses can enquire about the repeating the level 2 pathway.

Please note that the GCSE English requirements can be met either from GCSE English Language or GCSE English Literature. However, if you have not achieved a grade 4 in GCSE Language, you will be required to resit this.



Entry Requirements

Sixth Form Course Guide

All subjects require students to have achieved 5 grades at or above Grade 4. Some subjects have additional subject specific requirements which are listed below. Students are expected to study the equivalent of three level 3 courses.

Please note that the GCSE English requirements can be met either from GCSE English Language or GCSE English Literature. However, if you have not achieved a grade 4 in GCSE Language, you will be required to resit this.

Skegness Academy also reserves the right to withdraw a course if there are insufficient numbers of students wishing to take it up and/or due to availability of teaching staff.

BTEC National Extended Certificate Applied Law	Grade 5 or above in GCSE English
BTEC National Extended Certificate in Applied Science	Grade 4 or above in GCSE English, GCSE maths and a 4-4 in science.
BTEC National Diploma Art and Design	Grade 4 or above in GCSE English
BTEC National Extended Certificate Art and Design	Grade 4 or above in GCSE English
BTEC National Diploma in Children's Play, Learning and development (CPLD)	Grade 4 or above in GCSE English
A-Level English Literature	Grade 6 or above in GCSE English Language and English Literature
A-Level Geography	Grade 5 or above in GCSE English
Cambridge Technical Extended Certificate in Health and Social Care	Grade 4 or above in GCSE English
BTEC National Extended Certificate Information Technology	Grade 4 or above in GCSE English
BTEC National Diploma Performing Arts	Grade 4 or above in GCSE English
BTEC National Extended Certificate Performing Arts	Grade 4 or above in GCSE English
A Level Sociology	Grade 5 or above in GCSE English
Cambridge Technical Diploma in Sport and Physical Activity	Grade 4 or above in GCSE English. Students must also be practically competent in sport and take part in an activity regularly, this is due to practical assessments within the course.
Cambridge Technical Extended Certificate in Sport and Physical Activity	

BTEC National Extended Certificate Applied Law

Sixth Form Course Guide



Overview

For further information, please contact Miss V Thompson, Curriculum Lead for the Arts & Culture Faculty vthompson@skegnessacademy.org

Size

Equivalent to One A-Level

Exam Board

Pearson

Course Length

2 years

Who will this course interest?

The BTEC National Extended Certificate in Applied Law is a qualification for post-16 learners who want to continue their education through applied learning and who aim to progress to higher education and ultimately to employment, in the legal sector.

Course overview

The course includes the opportunity to develop the research, communication, presentation, decision-making and critical-thinking skills valued by higher education and employers. The learning programme covers the following content areas:

- dispute solving in civil law
- investigating aspects of criminal law and the legal system
- applying the law
- contract law

First year

Externally assessed unit 1: dispute solving in civil law.

- Exploring how the law of negligence is dealt with in English law.

Internally assessed unit 2: investigating aspects of criminal law and the legal system.

- Will give you an understanding of the way the criminal justice system works in the United Kingdom.

Second year

Externally assessed unit 3: applying the law.

- Focuses on criminal offences including fatal offences and offences against property.

Internally assessed unit 6: contract law

- Will help you to understand how contracts are formed and why they are so vital.

Assessment structure

Assessment involves both internally assessed units of study and externally assessed, set tasks.

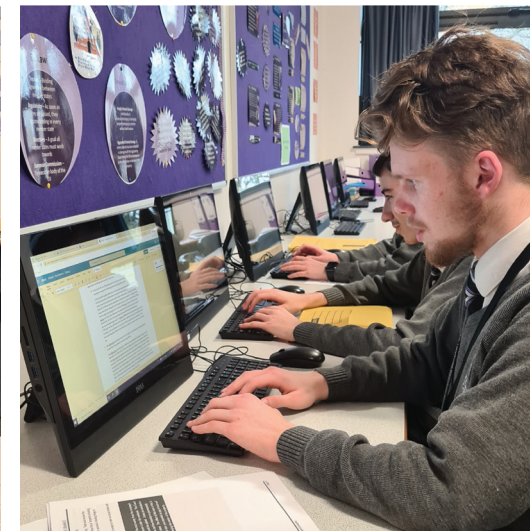
Internal assessment is carried out by a specialist teacher following their deadline and will be marked using pass, merit or distinction gradings.

External assessment involves set tasks provided and marked by the exam board. These will also be marked using pass, merit or distinction gradings.

Once all internal and external units have been completed, the individual marks are combined to calculate a student's overall grading. These will include Pass (E), Merit (C), Distinction (A) or Distinction* (A*). Students must grade on all parts of the course in order to achieve a qualification.

What could this lead to?

The qualification carries UCAS points and if it is taken alongside other qualifications as part of a two-year programme of learning, then it is recognised by higher education providers as contributing to meeting admission requirements for many courses. It will support entry to many higher education courses, depending on the other qualifications learners have taken. Learners should always check the entry requirements for degree programmes with specific higher education providers. The qualification can also support progression to employment directly or via an Apprenticeship



BTEC National Extended Certificate in Applied Science

Sixth Form Course Guide



Overview

For further Information, please contact Mr Freeman, Curriculum Leader for Science rfreeman@skegnessacademy.org

Size

Equivalent to One A-Level

Exam Board

Pearson

Course Length

2 years

Who will this course interest?

The BTEC National Extended Certificate in Applied Science is designed for learners interested in the studying across all three sciences of biology, chemistry and physics rather than specialising in one. You will learn on this course the use of scientific techniques and procedures. You will develop skills such as problem solving, teamwork, interpersonal skills as well as how to collect and interpret data. All of which are all highly valued and sought after by employers.

Course overview

The Pearson BTEC Level 3 National Extended Certificate in Applied Science is a qualification for post-16 learners who want to continue their education through applied learning and who aim to progress to higher education and ultimately to employment, possibly in the applied science sector. The aims to give a coherent introduction to study of the applied science sector.

First year

Externally assessed unit 1: principles and applications of science
- Covering key concepts in biology, chemistry and physics. This unit concludes with a two-hour written assessment.

Internally assessed unit 2: practical scientific procedures and techniques

- Introduction to quantitative laboratory techniques, calibration, chromatography, calorimetry and laboratory safety, which are all relevant to the chemical and life science industries.

Second year

Externally assessed unit 3: science investigation skills
- Covers the stages involved and the skills needed in planning a scientific investigation: how to record, interpret, draw scientific conclusions and evaluate. The conclusion to this unit will involve a task set and marked by Pearson and completed under supervised period of two hours and fifteen minutes.

One optional internally assessed unit specialising in and area of biology, chemistry or physics.

Assessment structure

Assessment involves both internally assessed units of study and externally assessed, set tasks.

Internal assessment is carried out by a specialist teacher following their deadline and will be marked using pass, merit or distinction gradings.

External assessment involves set tasks provided and marked by the exam board. These will also be marked using pass, merit or distinction gradings.

Once all internal and external units have been completed, the individual marks are combined to calculate a student's overall grading. These will include Pass (E), Merit (C), Distinction (A) or Distinction* (A*). Students must grade on all parts of the course in order to achieve a qualification.

The internally assessed parts of the course equate to 42% of the qualification while external assessment equates to 58%.

What could this lead to?

This course can also be counted towards entry for a degree or apprenticeship in areas such as Applied Biology, Applied Chemistry, Applied Physics, Medical Science, Forensic Science, Physiology, Psychology and Biochemistry. It is advised that you check UCAS entry requirements for degree courses you are interested in to ensure that this course would support higher education applications.



BTEC National Diploma Art and Design

Sixth Form Course Guide



Overview

For further information, please contact Miss V Thompson Curriculum Lead for the Arts & Culture Faculty vthompson@skegnessacademy.org

Size

Equivalent to Two A-Levels

Exam Board

Pearson

Course Length

2 years

Who will this course interest?

The Pearson BTEC Level 3 National Diploma in Art and Design is intended as a qualification for post-16 learners wanting to continue their education through applied learning and who aim to progress to higher education, and ultimately to employment, possibly in the creative industries. The creative industries is one of the fastest growing in the UK, so Art and Design has never been more relevant.

Course overview

As part of the course students will gain practical and theoretical knowledge in a broad range of specialisms, these include drawing, painting, digital, two and three-dimensional design and art history as well as guidance in building portfolios, preparing for interviews and future careers in the art and design sector.

First year

Internally Assessed, Unit 3: The Creative Process and Unit 12: Fine Art Materials, Techniques and Processes

- Studied together as part of a thematic project to begin students first year of study.

Externally Assessed, Unit 1: Visual Communication in Art and Design

- A practical exploration of a theme provided by the exam board with
- A controlled written period of three hours of assessment at the end.

Externally Assessed, Unit 2: Critical and Contextual References in Art and Design

- A theoretical exploration of a range of artists with a written study over three and a half hours, completed for final assessment.

Second year

Internally Assessed, Unit 5: Developing and Art and Design Portfolio

- A project dedicated to learning about, developing and building a portfolio ready for future study or employment.

Internally Assessed, Unit 4: Materials, Techniques and Processes in Art and Design

- A thematic project exploring two-dimensional materials techniques and processes, building on skills learned during the first year.

Internally Assessed, Unit 13: 3D Design Materials, Techniques and Processes

- Exploration of the use of three-dimensional materials, techniques and processes around a theme.

Externally Assessed, Unit 7: Developing and Realising Creative Intentions

- A practical synoptic assessment set over a number of weeks where students will respond to a theme released by the exam board. This will also be the conclusion to the programme of study for all students.

Assessment structure

There are both internally and externally assessed units, studied across both years of the qualification. Internally assessed units are studied at the beginning of each academic year. These are thematic and will allow you to respond in a personal way, taking into consideration the requirements of the brief. Externally assessed units are set and marked by the exam board and take place in the second half of the academic year. These are a combination of both written and practical assessments with differing time limits.

There are a number of compulsory and optional units studied over the two-year period which will result in the completion of your qualification. You are required to grade on each unit to qualify for your result.

What could this lead to?

Successful completion of any art and design related course will open up a range of opportunities for you for further and higher education, employment and apprenticeships depending on your preference. We recommend completing an art and design-based course if you are considering future employment or a degree in any design-based career, i.e interior design, fashion design, graphic design or careers in architecture, photography, fine art, animation, advertising, digital artistry and illustration. For future study or employment, you will be required to produce a portfolio of art and design evidence for submission.



BTEC National Extended Certificate Art and Design

Sixth Form Course Guide



Overview

For further information, please contact Miss V Thompson Curriculum Lead for the Arts & Culture Faculty vthompson@skegnessacademy.org

Size

Equivalent to One A-Level

Exam Board

Pearson

Course Length

2 years

Who will this course interest?

The Pearson BTEC Level 3 National Extended Certificate in Art and Design is intended as a qualification for post-16 learners wanting to continue their education through applied learning and who aim to progress to higher education, and ultimately to employment, possibly in the creative industries. The creative industries is one of the fastest growing in the UK, so Art and Design has never been more relevant. This option would be more appropriate for those students who wish to study other subjects alongside art and design.

Course overview

As part of the course students will gain practical and theoretical knowledge in a broad range of specialisms, these include drawing, painting, digital, two and three-dimensional design and art history as well as information on future careers in the art and design sector. There will also be the possibility to take part in enrichment opportunities offered including trips and visits, and direct contact with contemporary artists.

First year

Internally Assessed, Unit 12: Fine Art Materials, Techniques and Processes

- studied as part of a thematic project to begin students first year of study.

Externally Assessed, Unit 1: Visual Communication in Art and Design

- A practical exploration of a theme provided by the exam board with a controlled written period of three hours of assessment at the end.

Second year

Internally Assessed, Unit 3: The Creative Process

- A thematic project exploring the processes needed to be successful in Art and Design, building on skills learned during the first year.

Externally Assessed, Unit 2: Critical and Contextual References in Art and Design

- A theoretical exploration of a range of artists with a written study over three and a half hours, completed for final assessment.

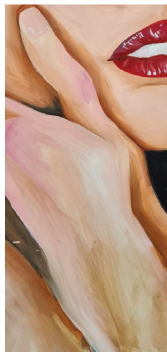
Assessment structure

There are both internally and externally assessed units, studied across both years of the qualification. Internally assessed units are studied at the beginning of each academic year. These are thematic and will allow you to respond in a personal way, taking into consideration the requirements of the brief. Externally assessed units are set and marked by the exam board and take place in the second half of the academic year.

There are a number of compulsory and optional units studied over the two-year period which will result in the completion of your qualification. You are required to grade on each unit to qualify for your final result. These are a combination of both written and practical assessments with differing time limits.

What could this lead to?

Successful completion of any art and design related course will open up a range of opportunities for you for further and higher education, employment and apprenticeships depending on your preference. We recommend completing an art and design-based course if you are considering future employment or a degree in any design-based career, i.e interior design, fashion design, graphic design or careers in architecture, photography, fine art, animation, advertising, digital artistry and illustration. For future study or employment, you will be required to produce a portfolio of art and design evidence for submission.





Overview

For further information, please contact Mr J Maycock, Curriculum Lead for the Sports and Social Science Faculty jmaycock@skegnessacademy.org

Size

Equivalent to Two A-Levels

Exam Board

Pearson

Course Length

2 years

Who will this course interest?

Students completing the CPLD level 3 will be aiming to go on to employment, often via the stepping stone of higher education. This qualification is designed for those with an interest in preparing for a career as an early year's educator in preschool or nursey settings.

Course overview

The course will support in developing the skills, knowledge and understanding needed to become an early year's educator through coursework and externally assessed assessments. Along with this there will be 750 hours of work experience. This will give valuable experience into two different workplaces, gaining an insight into preschool and nursey responsibilities roles.

First year

Externally assessed Unit 1: Child development

Externally assessed Unit 2: Development of children's communication, literacy, and numeracy skills

Internally assessed Unit 3: Play and Learning

Internally assessed Unit 5: Keeping children safe

Internally assessed Unit 6: Children's physical development, care and health needs.

Second year

Internally assessed, Unit 7: Children's personal, social and emotional development

Internally assessed, Unit 8: Working with parents and others in early years.

Internally assessed, Unit 9: Observation, assessment, and planning

Internally assessed, Unit 10: Reflective Practice

Internally assessed, Unit 11: The Early Years Foundation stage

Assessment structure

Assessment involves both internally assessed units of study and externally assessed, set tasks.

Internal assessment is carried out by a specialist teacher following their deadline and will be marked using pass, merit or distinction gradings.

External assessment involves set tasks provided and marked by the exam board. These will also be marked using pass, merit or distinction gradings.

Once all internal and external units have been completed, the individual marks are combined to calculate a student's overall grading. These will include Pass (E), Merit (C), Distinction (A) or Distinction* (A*). Students must grade on all parts of the course in order to achieve a qualification.

What could this lead to?

This qualification is a licence to practice in the early years sector. Leading to roles which include, early years educator, nanny or childminder to name a few. The qualification carries UCAS points and if it is taken alongside other qualifications as part of a two-year programme of learning, then it is recognised by higher education providers as contributing to meeting admission requirements for many courses.



A-Level English Literature

Sixth Form Course Guide



Overview

For further Information, please contact Miss W Howard, Curriculum Leader for English and Literacy whoward@skegnessacademy.org

Size

Equivalent to One A-Level

Exam Board

AQA

Course Length

2 years

Who will this course interest?

The A-Level English Literature course is aimed at students who are interested in exploring the relationships between texts and the contexts in which they were written, received and understood. This course will be especially interesting for those students who enjoy, reading, analysing language, exploring poetry, drama and plays as well as debating and challenging interpretations of text

Course overview

Students will explore texts in a number of different ways including the study of literary themes over time; the study of literature by engaging with historicist perspectives of the diachronic and synchronic; reading a variety of texts from a list determined by AQA; and writing about texts in a number of different ways.

First year

Externally assessed, unit 1: love through the ages

- Exploring different texts including Shakespearean plays and poetry.
- Studying the Shakespearean play 'Othello', an anthology of love poetry and two prose texts. There is a wide selection of prose texts available to study, from the 19th Century 'Wuthering Heights' by Emily Bronte to modern novels such as 'The Great Gatsby' by F. Scott Fitzgerald.
- This unit concludes with a three-hour written examination worth 40% of the final qualification.

Second year

Externally assessed, unit 2: texts in shared contexts

- Involves both independent critical study and written examination.
- Includes the study of texts from Modern Times: literature from 1945 to the present day, focusing on texts that reflect the social, political, and moral changes in our world since the end of the Second World War.
- This unit concludes with a two hour and thirty minute written examination worth 40% of the qualification and a critical study of no more than 2500 words worth 20% of the qualification.

Assessment structure

Assessment of the A-Level English Literature course includes 80% externally assessed examination and 20% non-examined assessment.

Unit 1: Love Through the Ages (Examination: 3 hours)

Section A: Shakespeare – one play text

Section B: Unseen Poetry – AQA Poetry Anthology

Section C: Comparing Texts – comparison of two texts (poetry and prose)

Unit 2: Texts in Shared Contexts: Modern Times: Literature from 1945 to the present day (Examination: 2 hours 30 mins)

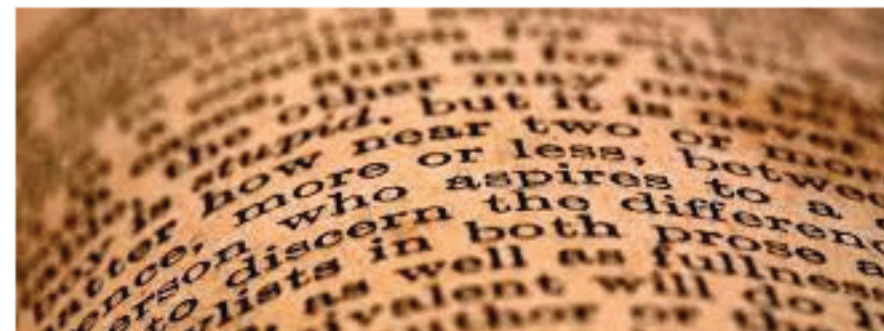
Section A: Set Texts – one prose text

Section B: Contextual Linking – one poetry text and one drama text

Non-Examined Assessment Unit: Independent Critical Study(Coursework). Comparative critical study of two texts, at least one of which must have written pre-1900.

What could this lead to?

This will help students who are interested in studying English at university. You could also be interested in journalism, writing blogs, becoming a teacher, script writer or even an actor. English Literature could be picked alongside other courses to be the basis for many careers.





Overview

For further Information, please contact Mr R Taylor, Curriculum Leader for EBaCC Faculty rtaylor@skegnessacademy.org

Size

Equivalent to One A-Level

Exam Board

AQA

Course Length

2 years

Who will this course interest?

Those students with an interest in the world around them will find the geography curriculum an interesting and engaging subject. You will study both the physical structure of the earth and about the human race and how they are affecting the environment, past present and future.

Course overview

You will study a wide range of current global issues such as globalisation, development, tectonic hazards, climate change, biodiversity, leisure and tourism. You will also develop valuable research and investigation skills through fieldwork, which forms an integral part of the A level scheme of work. You will be assessed through external examinations at the end of the academic year. You will complete an individual investigation, which must include data collected in the field. The individual investigation must be based on a question or issue defined and developed by you relating to any part of the specification content.

First year

Externally assessed component one: physical geography
- learning about coastal systems and landscapes, hazards and how the world is changing.

Externally assessed component three: geography fieldwork investigation

- preparation for an individual investigation, collecting data in the field and based on a question or issues developed by you, the student.

Second year

Externally assessed component two: human geography
- Extending your learning by discovering systems and governance as well as explore the population and the environment as part of the human geography.

Externally assessed component three: geography fieldwork investigation

- preparation for an individual investigation, collecting data in the field and based on a question or issues developed by you, the student. This will be assessed through 3000-4000 words written assignment.

You will also cement your learning for component one ready for the written examinations.

Assessment structure

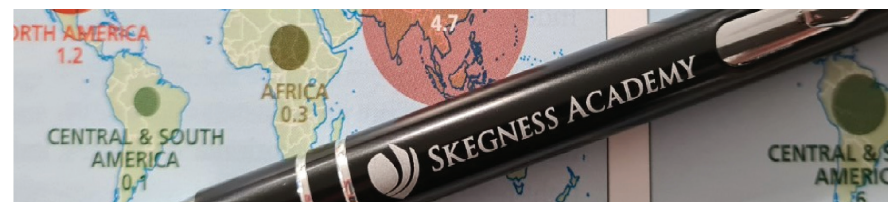
Paper 1 - Physical Geography - 2 hour 30 minute exam worth 40%

Paper 2 - Human Geography - 2 hour 30 minute exam worth 40%

Geographical Investigation - a 4000 word submitted fieldwork investigation worth 20%

What could this lead to?

Geography can lead to a wide range of university courses. Students will learn and use a wide variety of transferable skills throughout the course. These valuable skills are in great demand and are recognised by employers and universities. It is advised that you check UCAS entry requirements for degree courses you are interested in to ensure that this course would support higher education applications. Future careers may include conservation, coastal management, education, management, tourism, transport, and many more.



Cambridge Technical Extended Certificate in Health and Social Care

Sixth Form Course Guide



Overview

For further information, please contact Mr J Maycock, Curriculum Lead for the Sports and Social Science Faculty jmaycock@skegnessacademy.org

Size

Equivalent to One A-Level

Exam Board

OCR

Course Length

2 years

Who will this course interest?

This will appeal to those individuals who are interested in the care system and how to interact with a variety of individuals in the world of work and who are interested in seeking a job role within the NHS or social care sectors. The course is designed with essential skills and knowledge that can be applied to everyday work within the public sector.

Course overview

The Cambridge Technical in Health and Social Care uses direct experience to help students develop the underpinning knowledge as well as practical and personal skills required to work in this sector. They learn how to deliver person-centred care and support to meet the needs of a variety of service-users

First year

Internally assessed, unit 1: Building positive relationships in health and social care

- Introduction to the many different relationships within the health and social care sector. Along with the concept of the person-centred approach, this will support building relationship skills.

Externally assessed, unit 2: Equality diversity and rights in health and social care

- Understanding the implications of diversity on practice and the effects of discriminatory practice on individuals who require care and support and how legislation and national initiatives can support and promote anti-discriminatory practice. This is assessed through a written task of 1 hour 30 minutes.

Externally assessed, Unit 3: Health safety and security in health and social care

- Introduction to health, safety and security in health and social care. This is assessed through a written task of 1 hour 30 minutes.

Second year

Externally assessed, Unit 4: Anatomy and physiology for health and social care.

- Introduction to the basic structure and functions of the body systems involved in everyday activities and maintenance of health, including cardiovascular, respiratory, and digestive systems. This is assessed through a written task of 2 hours.

Internally assessed, Unit 10: Nutrition and health

- Introduction to nutritional health and the components of good nutrition.

Internally assessed, Unit 13: Sexual health, reproduction, and early developmental stages.

- Health and wellbeing are of vital importance even before you are born.

Assessment structure

Assessment involves both internally assessed units of study and externally assessed, set tasks.

Internal assessment is carried out by a specialist teacher following their deadline and will be marked using pass, merit or distinction gradings.

External assessment involves set tasks provided and marked by the exam board. These will also be marked using pass, merit or distinction gradings.

Once all internal and external units have been completed, the individual marks are combined to calculate a student's overall grading. These will include Pass (E), Merit (C), Distinction (A) or Distinction* (A*). Students must grade on all parts of the course in order to achieve a qualification

What could this lead to?

This course will open up a range of opportunities for you for further and higher education, employment and apprenticeships depending on your preference. We recommend you completing a Health and Social Care course if you are considering a future in employment or a degree i.e Midwife, nurse, social worker, paramedic, doctor, health visitor, occupational therapist, radiographer.

BTEC National Extended Certificate Information Technology

Sixth Form Course Guide



Overview

For further information, please contact Miss V Thompson curriculum lead for the Arts & Culture Faculty vtompson@skegnessacademy.org

Size

Equivalent to One A-Level

Exam Board

Pearson

Course Length

2 years

Who will this course interest?

The Pearson BTEC Level 3 National Extended Certificate in Information Technology is designed for learners who are interested in the study of creating IT systems to manage and share information alongside other fields of study. Learners will develop a common core of IT knowledge and study areas such as the relationship between hardware and software that form an IT system, managing and processing data to support business and using IT to communicate and share information.

Course overview

The aim of this course is to give you the opportunity to develop your knowledge and skills in IT systems, systems management and social media in business.

First year

Externally assessed unit 2: creating systems to manage information

- An assessment whereby you will respond to the needs of a client through different tasks completed over a five hour period of assessment, submitted electronically.

Internally assessed unit 3: using social media in business

- Explores how businesses use social media to promote their products and services.

Second year

Externally assessed unit 1: Information technology systems a synoptic, two-hour written assessment.

Internally assessed: Optional unit focused on either data modelling or website development.

Assessment structure

This course is made up of both internally and externally assessed units which must be concluded for final grading. Grading is done through Pass, Merit and Distinction with each unit assessed individually before all totals are combined for a final qualification grade of either Pass (E), Merit (C), Distinction (A), or Distinction* (A*).

Externally assessed units are set and assessed by the exam board, whilst internally assessed units are moderated following completion.

For both internally and externally assessed units, assessment could be completed through either or both practical and written evidence.

What could this lead to?

Following the successful completion of this course over two years students would have a view of progressing to one of a wide range of further or higher education courses not only in the IT sector but across a range of different subject options. You would also be considering a career in the Information Technology, Business or similar sectors as an option for your future.

The qualification carries UCAS points and if it is taken alongside other qualifications as part of a two-year programme of learning, then it is recognised by higher education providers as contributing to meeting admission requirements for many courses.



BTEC National Diploma Performing Arts

Sixth Form Course Guide



Overview

For further information, please contact Miss V Thompson curriculum lead for the Arts & Culture Faculty vtompson@skegnessacademy.org

Size

Equivalent to Two A-Levels

Exam Board

Pearson

Course Length

2 years

Who will this course interest?

The Pearson BTEC Level 3 National Diploma in Performing Arts is intended as a qualification for post-16 learners who want to continue their education through applied learning, and who aim to progress to higher education and to employment in the performing arts sector. The qualification is equivalent in size to two A Levels, and it has been designed as part of a two-year programme.

Course overview

Students will study both practical and theoretical parts of performing arts over the two years:

- Performance – practical exploration and application of specialist skills and techniques, individual and group performance
- Research, analysis and commissioning – aims to develop skills that are essential for further study of performing arts, including research methodology, independent learning, extended writing, sourcing, idea generation, evaluating information and drawing conclusions from it.

First year

Externally assessed unit 1: Investigating practitioner's work

- A theory-based exploration and analysis of practitioner's work concluding with a three hour assessed written task.

Internally assessed unit 2: Developing skills and techniques for live performance

- A focus on technical performance skills and techniques.

Externally assessed unit 3: Group performance workshop

A practical and written assessment where you perform in groups concluding with a five hour assessment across a number of sessions.

One internally assessed, optional unit specialising in either dance, acting or musical theatre depending on preference.

Second year

Internally assessed unit 4: performing arts in the community

- Developing knowledge and understanding about performing in the community.

Externally assessed unit 5: Individual performance commission

- A practical and research assessment with the conclusion of a two hour supervised assessment.

Internally assessed unit 6: Final live performance to an audience - Practical exploration and application of specialist skills and techniques.

One internally assessed optional unit specialising in either dance, acting or musical theatre depending on preference.

Assessment structure

This course is made up of both internally and externally assessed units which must be concluded for final grading. Grading is done through Pass, Merit and Distinction with each unit assessed individually before all totals are combined for a final qualification grade of either Pass (E), Merit (C), Distinction (A), or Distinction* (A*).

Externally assessed units are set and assessed by the exam board, whilst internally assessed units are moderated following completion.

For both internally and externally assessed units, assessment could be completed through either or both practical and written evidence.

What could this lead to?

This qualification provides learners with the opportunity to develop all-round performance skills and transferable skills such as self-confidence, self-presentation, personal discipline, time management and organisational skills which are highly regarded by higher education and employers.

With good quality results students who qualify from this course could continue into further or higher education within the performing arts sector as well as consider employment or apprenticeships in this area.



BTEC National Extended Certificate Performing Arts

Sixth Form Course Guide



Overview

For further information, please contact Miss V Thompson curriculum lead for the Arts & Culture Faculty vtompson@skegnessacademy.org

Size

Equivalent to One A-Level

Exam Board

Pearson

Course Length

2 years

Who will this course interest?

The Pearson BTEC Level 3 National Diploma in Performing Arts is intended as a qualification for post-16 learners who want to continue their education through applied learning, and who aim to progress to higher education and to employment in the performing arts sector. The qualification is equivalent in size to two A Levels, and it has been designed as part of a two-year programme.

Course overview

Students will study both practical and theoretical parts of performing arts over the two years:

- Performance – practical exploration and application of specialist skills and techniques, individual and group performance
- Research, analysis and commissioning – aims to develop skills that are essential for further study of performing arts, including research methodology, independent learning, extended writing, sourcing, idea generation, evaluating information and drawing conclusions from it.

First year

Externally assessed unit 1: Investigating practitioner's work

- A theory-based exploration and analysis of practitioner's work concluding with a three hour assessed written task.

Internally assessed unit 2: Developing skills and techniques for live performance

- A focus on technical performance skills and techniques.

Second year

Externally assessed unit 3: Group performance workshop

- A practical and written assessment where you perform in groups concluding with a five hour assessment across a number of sessions.

One internally assessed, optional unit specialising in either dance, acting or musical theatre depending on preference.

Assessment structure

This course is made up of both internally and externally assessed units which must be concluded for final grading. Grading is done through Pass, Merit and Distinction with each unit assessed

individually before all totals are combined for a final qualification grade of either Pass (E), Merit (C), Distinction (A), or Distinction* (A*).

Externally assessed units are set and assessed by the exam board, whilst internally assessed units are moderated following completion.

For both internally and externally assessed units, assessment could be completed through either or both practical and written evidence.

What could this lead to?

This qualification provides learners with the opportunity to develop all-round performance skills and transferable skills such as self-confidence, self-presentation, personal discipline, time management and organisational skills which are highly regarded by higher education and employers.

With good quality results students who qualify from this course could continue into further or higher education within the performing arts sector as well as consider employment or apprenticeships in this area.





Overview

For further information, please contact Mr J Maycock, Curriculum Lead for the Sports and Social Science Faculty jmaycock@skegnessacademy.org

Size

Equivalent to One A-Level

Exam Board

AQA

Course Length

2 years

Who will this course interest?

Sociology will interest students who are keen to learn about the world around them. Sociology requires you to challenge the factors and processes that influence human behaviours and interactions so anyone with an inquisitive mind will find Sociology interesting and thought-provoking.

Course overview

Sociology is the study of society and the people within it. Students will be equipped with the knowledge and skills to be able to understand, explain and critically analyse the causes of human behaviour and the impact of this changing behaviour on society.

Students will develop a critical awareness of the role, purpose and impact of the social institutions in society and develop an understanding of the social, educational, legal and political changes in society. Students will apply the impact of both the formal and informal systems on the different groups in society and develop a sense of tolerance and understanding of gender, class, age, ethnicity and diversity within society.

First year

Students study Education and Families & Households. Students learn about the functions of the education system and how it prepares young people for the next step in their life. Learners take a critical approach to the education system; looking deep into Education Policy and how the factor and processes both inside and outside of the school can impact achievement. Learners then apply their learning to the Family; looking at how the concept of 'family' has changed over the past 100 years. Learners will explore different family types, roles within the family, childhood and the potential dark side of the family. Students will gain knowledge of the methods used in sociological research and critically analyse how effective they are.

Second year

Students study Beliefs in Society and the role and impact that religion can have on a society and the members in it. Learners will explore concepts such as religious fundamentalism, secularisation and the

relationship between different social groups and their religious belief and practice. Students will go on to explore Crime & Deviance. Learners will explore the reasons for crime and deviance in society and analyse the reasons for their behaviour; linking to previous learning from other units. Students will apply sociological theory and perspectives and analyse the extent crime is increasing in our society evaluating the possible reasons for this. Learners will look at global crimes, individual crimes and also white collar and corporate crimes as part of their learning.

Assessment structure

A Level Sociology is purely examination based and learner sit 3 examinations at the end of the second year which are all 2 hours each.

Paper 1: Education with Theory & Methods

Paper 2: Topics in Sociology (Beliefs in Society and Families & Households)

Paper 3: Crime & Deviance with Theory & Methods

What could this lead to?

This course would be useful for anyone interested in a career in education, social work, the legal system and Criminal Justice System, police, probation, or prison service. Furthermore, for anyone interested in politics or the civil service, this course is highly suitable. Studying Sociology shows that a learner has a critical mind and the ability to investigate social patterns and analyse social issues.

The qualification carries UCAS points and if it is taken alongside other qualifications as part of a two year programme of learning, then it is recognised by higher education providers as contributing to meeting admission requirements for many courses.

Cambridge Technical Diploma in Sport and Physical Activity

Sixth Form Course Guide



Overview

For further information, please contact Mr J Maycock, Curriculum Lead for the Sports and Social Science Faculty jmaycock@skegnessacademy.org

Size

Equivalent to Two A-Levels

Exam Board

OCR

Course Length

2 years

Who will this course interest?

The Cambridge Technical Diploma in Sport and Physical Activity will interest students who enjoy participating in sport and physical activity and want to develop their skills further exploring the theory of sport across a broad range of aspects. You will learn in detail about the human body, psychology of sport and how it is funded and developed to get as many people as possible participating and leading a healthy active life.

Course overview

The Cambridge Technical in Sport and Physical Activity provides students with practical opportunities to develop relevant core knowledge and skills. Students further develop their skills through specialist pathways that help them deliver sport and physical activity to a wide range of participants.

First year

Externally assessed Unit 1: Body Systems and the effects of physical activities. Written assessment lasting 1 hour 30 minutes.

Internally assessed Unit 2: Sports coaching and activity leadership

Externally assessed Unit 3: Sports organisation and development. written assessment lasting 1 hour.

Internally assessed Unit 8: Organisation of sports events

Internally assessed Unit 11: Physical activity for specific groups

Internally assessed Unit 12: Nutrition and diet for sport

Second year

Externally assessed Unit 4: Working safely in sport, exercise, health and leisure. Written assessment lasting 1 hour 30 minutes.

Internally assessed Unit 5: Performance analysis in sport and exercise

Internally assessed Unit 13: Health and fitness testing for sport and exercise

Internally assessed Unit 17: Sports injury and rehabilitation

Internally assessed Unit 18: Practical skills in sport and physical activities

Internally assessed Unit 19: Sport and exercise psychology

Assessment structure

Assessment involves both internally assessed units of study and externally assessed, set tasks.

Internal assessment is carried out by a specialist teacher following their deadline and will be marked using pass, merit or distinction gradings.

External assessment involves set tasks provided and marked by the exam board. These will also be marked using pass, merit or distinction gradings.

Once all internal and external units have been completed, the individual marks are combined to calculate a student's overall grading. These will include Pass (E), Merit (C), Distinction (A) or Distinction* (A*). Students must grade on all parts of the course in order to achieve a qualification.

What could this lead to?

We recommend completing a sport and activity course if you are considering future employment or a degree in any sport and leisure sector, PE teacher, Sports Coach, Personal Trainer, Sports Journalism, Leisure Management or Assistant and Activity Leaders. The qualification carries UCAS points and if it is taken alongside other qualifications as part of a two-year programme of learning, then it is recognised by higher education providers as contributing to meeting admission requirements for many courses.



Cambridge Technical Extended Certificate in Sport and Physical Activity

Sixth Form Course Guide



Overview

For further information, please contact Mr J Maycock, Curriculum Lead for the Sports and Social Science Faculty jmaycock@skegnessacademy.org

Size

Equivalent to One A-Level

Exam Board

OCR

Course Length

2 years

Who will this course interest?

The Cambridge Technical Diploma in Sport and Physical Activity will interest students who enjoy participating in sport and physical activity and want to develop their skills further exploring the theory of sport across a broad range of aspects. You will learn in detail about the human body, psychology of sport and how it is funded and developed to get as many people as possible participating and leading a healthy active life.

Course overview

Sport and Physical Activity provides students the opportunity to develop relevant core knowledge and skills within the world of sport. Students further develop their skills through specialist pathways that help them deliver sport and physical activity to a wide range of participants.

First year

Externally assessed Unit 1: Body Systems and the effects of physical activities. Written assessment lasting 1 hour 30 minutes.

Internally assessed Unit 2: Sports coaching and activity leadership

Second year

Externally assessed Unit 3: Sports organisation and development. written assessment lasting 1 hour.

Internally assessed Unit 17: Sports injury and rehabilitation

Internally assessed Unit 19: Sport and exercise psychology

Assessment structure

Assessment involves both internally assessed units of study and externally assessed, set tasks.

Internal assessment is carried out by a specialist teacher following their deadline and will be marked using pass, merit or distinction gradings.

External assessment involves set tasks provided and marked by the exam board. These will also be marked using pass, merit or distinction gradings.

Once all internal and external units have been completed, the individual marks are combined to calculate a student's overall grading. These will include Pass (E), Merit (C), Distinction (A) or Distinction* (A*). Students must grade on all parts of the course in order to achieve a qualification.

What could this lead to?

We recommend completing an sport and activity course if you are considering future employment or a degree in any sport and leisure sector, PE teacher, Sports Coach, Personal Trainer, Sports Journalism, Leisure Management or Assistant and Activity Leaders. The qualification carries UCAS points and if it is taken alongside other qualifications as part of a two-year programme of learning, then it is recognised by higher education providers as contributing to meeting admission requirements for many courses.



JOIN OUR **SIXTH FORM** AND BUILD YOUR FUTURE **WITH US**



SKA-allpost16@skegnessacademy.org



Skegness Academy, Burgh Road, Skegness, PE25 2QH