

Week 1: The DAP

Early Nazi Party:

The German Workers Party (DAP) was set up by **Anton Drexler** in 1919 in Munich, Germany. At first there were only a small group of 50 members. They were a **right-wing party**, with both nationalist and socialist ideas.

Nationalism

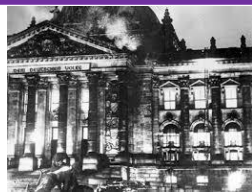
They believed the Treaty of Versailles was humiliating and the army had been 'stabbed in the back.' They wanted all Germans to be united in a single country, to make Germany strong again.

Socialism

They hated Communists, yet they thought workers should be able to share in more profits of their company and wanted some government profits to pay to rebuild the country. Big companies should be nationalised to share profits with everyone.

Nationalism

They believed the Treaty of Versailles was humiliating and the army had been 'stabbed in the back.' They wanted all Germans to be united in a single country, to make Germany strong again.



Week 2: Munich Putsch

In the **short term**, the Putsch was a failure and an embarrassment for Hitler and the Nazi's. However, in the **long term**, the results were not all bad for Hitler.

Short term consequences (failure):

- Hitler was sentenced for 5 years (he would serve 9)
- The Nazi party was banned and lost its leader

Long term successes:

- Hitler now realised he needed a new strategy. Violence didn't work, so now the Nazi's would need to exploit democracy to get power using public support. This gave a new drive for Hitler to plan.
- Hitler used his trial to gather national publicity for the Nazi's. His trial reached the national papers and he spoke well against the Weimar Republic, the Jews, Versailles, and the 'November Criminals'.
- Hitler used the time in prison to write Mein Kampf (My Struggle) which contained his political ideas and became the inspiration for the future Nazi Party.

Week 3: Germany 1929-32

24 October 1929

- Known as Black Thursday!
- 13 Million shares were sold.
- As investors began to sell shares, the ordinary people who had invested their life savings lost **confidence** in the system. They rushed to sell their shares before the prices fell further.

The Wall Street Crash: **29 October 1929**

- 16 million shares were sold in a single day, leading to a Depression in the USA, the '**Great Depression**'.

How Did it Affect the Nazis?

- **The depression caused hatred towards the Weimar Republic.** People began to **abandon the moderate parties and switched to the Nazis** and KPD.
- **The Nazis used the depression to get more votes** as they **promised to fix the economy**. In speeches Hitler promised 'bread and work' to all workers in Germany, whilst they opened soup kitchens for the poor. However, Communist support grew with workers.

Date	Unemployment
September 1929	1.3 million
September 1931	4.3 million
September 1932	5.1 million
January 1933	6.1 million

	May 1928	Sept 1930	July 1932
Social Democrats (SPD)	152	143	133
Nazi Party (NSDAP)	12	107	230
Communists (KPD)	54	77	89

History: Year 9 Term 2 Hitler's Rise to Power

Week 4: Reichstag Fire

The Reichstag fire

On 27 February 1933 the Reichstag building, which was home to the German Parliament, was burned down. The communists were blamed for the fire because a Dutch communist, called Van der Lubbe, was found in the building as it burned.

Hitler used the fire to the **Nazi Party's advantage** in two ways:
• He **expelled the communists from Parliament** and imprisoned many communist leaders. This stopped them campaigning prior to the March elections.

• He announced that **the country was in danger from the communists** during the election campaign. This encouraged many to vote for the Nazis, who were seen as anti-communist.

• **Hindenburg declared a state of emergency using Article 48** of the Weimar Constitution. This resulted in newspapers being censored and personal letters and phone calls being checked. This is seen as the start of the end of democracy in Germany.

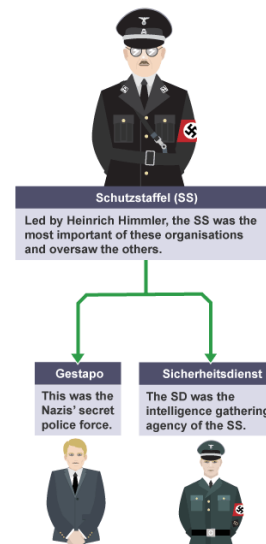
Both these actions helped the Nazis to win more seats in the election of 5 March 1933, increasing their share of the vote from 33 per cent to 44 per cent.

The Enabling Act:

23 March 1933 - The Enabling Act

- The SA intimidates all the remaining non-Nazi Reichstag members.
- As a result, the Reichstag votes to give Hitler the powers to make his own laws.

Week 5: Police State



• **Schutzstaffel (SS)** - led by Heinrich Himmler, the SS was the most important of these organisations and oversaw the others. Initially set up as Hitler's personal bodyguard service, the SS was fanatically loyal to the Führer. It later set up concentration camps where 'enemies of the state' were sent.

• **Gestapo** - this was the Nazis' secret police force. Its job was to monitor the German population for signs of opposition or resistance to Nazi rule. It was greatly helped by ordinary German people informing on their fellow citizens.

• **Sicherheitsdienst (SD)** - this was the intelligence gathering agency of the SS. It was responsible for the security of Hitler and other top Nazis and was led by Himmler's right hand man, Reinhard Heydrich.

Key words:

Cause: A person or thing that gives rise to an action, phenomenon, or condition

Consequence: A result or effect

Putsch: The German word for a violent attempt to overthrow a government; a coup.

Propaganda: Information, especially of a biased or misleading nature, used to promote a political cause or point of view.

Consolidation: Make something stronger or more solid.

Police State: A country in which the government controls people's freedom by means of the police, especially secret police.

Week 1

Questions	Answers
What was the Early Nazi Party known as?	The DAP or the German Workers Party
What was German Nationalism?	The ideology that wanted all Germans to be united in a single country, to make Germany strong again.
What is socialism?	The ideology that thought workers should be able to share in more profits of their company and wanted some government profits to pay to rebuild the country. Big companies should be nationalised to share profits with everyone.
What is antisemitism?	Antisemitism is the hatred of the Jews.

Week 2

Questions	Answers
In the long term, was the putsch a success? Why?	Yes, it was a long-term success. The nazi's received more publicity and it gave Hitler time to reconsider his strategy. He would no longer use violence, but work to be elected.
How long was Hitler sentenced to?	5 years
How long did Hitler serve in prison?	9 months
What was the name of Hitler's book?	Mein Kampf or 'my struggle.'

Week 3

Questions	Answers
What happened on the 24 th October 1929, and what did it become known as?	There was a panic selling of shares in the USA and it was known as Black Thursday.
What did the Wall Street Crash lead to, world-wide?	It led to an economic depression known as the Great Depression.
What happened to the number of votes for the Nazi's after 1929?	The number of votes grew from 12 seats in 1928 to 230 by 1932.
What happened to unemployment after 1929?	Unemployment grew to a record high, 6.1 million.

History: Year 9 Term 2 Hitler's Rise to Power

Week 4

Questions	Answers
When was the Reichstag Fire?	27 February 1933
What happened to communists after the fire?	The party was banned and many were arrested. Some were sent to concentration camps.
What was article 48?	An emergency law which resulted in newspapers being censored and personal letters and phone calls being checked. This is seen as the start of the end of democracy in Germany.
When was the Enabling Act?	23 March 1933

Week 5

Questions	Answers
Who led the SS?	Heinrich Himmler
What does the SS stand for?	Schutzstaffel (SS)
What were the Gestapo?	Secret police to monitor the German population for signs of opposition or resistance to Nazi rule
Who was in charge of the SD?	Reinhard Heydrich.
What did the SD do?	They were in charge of intelligence gathering for the SS.

Key words:

Cause: A person or thing that gives rise to an action, phenomenon, or condition

Consequence: A result or effect

Putsch: The German word for a violent attempt to overthrow a government; a coup.

Propaganda: Information, especially of a biased or misleading nature, used to promote a political cause or point of view.

Consolidation: Make something stronger or more solid.

Police State: A country in which the government controls people's freedom by means of the police, especially secret police.