

Art and Design Learning Journey

YEAR 11

PSA: NEA
You will all be given the opportunity to improve on your grade from Year 10 by taking part in a second assignment. This is moderated by the exam board!



Component 2
Component 3 is released in January and you will be asked to complete a project based on a theme. This is marked by the exam board!

Move onto Post-16 Study

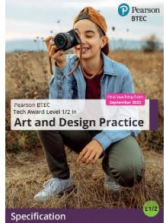
Comics and Graphic Novels
Your teacher will support you in completing a project based on comics and graphic novels.



PSA: NEA
Your first assignment will be released for you to complete. This will have a theme attached to it for you to explore. Consider how you can use your skills from other projects to help you. This is moderated by the exam board!

Your teacher will lead your group in exploring new materials, techniques and processes, ready for your first assignment based on the theme Hybrid.

Mini-Project



Baseline Assessment
This will start your BTEC journey.

YEAR 10

Mexican Art

Research
Explore the Mexican Art



Experiments
Explore different ways of working based on your research!

Ideas
Reflect on your work to create a final design

Final Response
What will your response be this time? How will you show progress?

Reflection
You will reflect on your successes to help inform your next steps with GCSE.

Cross-curricular link to English!

Cross-curricular link to RE!

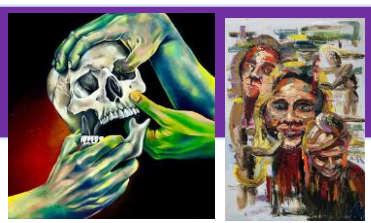
Narrative

Mid-line Assessment
How has your drawing improved?

Reflection
You will reflect on your successes to help inform your next steps.

Experiments
Explore different ways of working based on your research!

Research
Explore the work of Picasso and African Tribes



Using Sketchbooks
A short set of workshops on how to use a sketchbook.

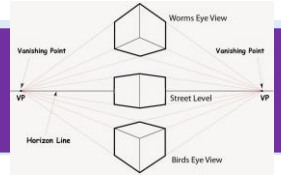
Sketchbooks

Baseline Assessment
How has your drawing improved?

YEAR 9

Architecture

Mid-line Assessment
How has your drawing improved?



Research
Explore the work of Barbara Gilhooly

Experiments
Explore different ways of working based on your research!

Ideas
Reflect on your work to create a final design.

Final Response
Produce a final response based on what you have learned.

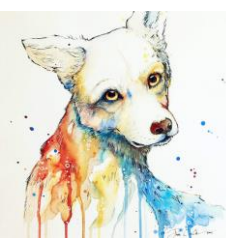
Evaluation
You will decide on how successful you have been!

Career link to Architecture!

Cross-curricular link to Maths!

Cross-curricular link to D&T!

Reflection
You will reflect on your successes to help inform your next steps.



Experiments
All of the artists you will explore in this project are current, working practitioners! They have made this their career! You will explore pencil crayon, mono-printing, collage, painting and clay.

Baseline Assessment
Let's check what progress you have made so far!

Animals

Career link to Fine Art!

YEAR 8

Mid-line Assessment
How has your drawing improved?

Identity



Research
Explore the work of Kimmy Cantrell.



Experiments
Explore different ways of working based on your research!

Ideas
Reflect on your work to create a final design.

Final Response
Produce a final response based on what you have learned.

Evaluation
You will decide on how successful you have been!

PSHE link to Wellbeing!

Curriculum link to History.

PSHE link to Healthy Eating!

Reflection
You will reflect on your successes to help inform your next steps.

Career link to Architecture!



Food

Experiments
You will explore different ways of working!

Baseline Assessment
This helps us to know what we need to do to help you with your art and design journey.

During the experiments stage you will explore the work of Vincent Van Gogh, Wayne Thiebaud, Sarah Graham, Megan Coyle and Claes Oldenburg. This will give you an understanding of how you can use oil pastels, acrylics, collage and three-dimensional sculpture to create your own pieces.

YEAR 7

And now for your next steps...

Employment

Apprenticeship

Further Education

Higher Education

External Controlled Assessment Thematic, Practical

For your final project you will produce practical work based on a theme provided by the exam board. You will be assessed on how well you create a realise ideas.

Unit 7

Developing a Portfolio-Internal

Following your research, now you will create and present your portfolio.

Unit 5

Project 3- Fiction

Based on three-dimensional materials, techniques and processes, you will create evidence based around the theme...

Unit 13

Project 2- Internal Identity of Lincolnshire

A project based on your locality which involves you having to demonstrate the creative process.

Unit 3

Developing a Portfolio-Internal

You will begin your journey to your future by researching the use of the portfolio.

Unit 5

Year Two

External Controlled Assessment-Thematic, Theoretical

Based on a theme provided by the exam board, you will compare two artists and justify your reasons for recommending them based on the theme.

Unit 2

Project 2- Internal Identity of Lincolnshire

A project based on your locality which involves you having to demonstrate the creative process.

Unit 3

Year Two

External Controlled Assessment-Thematic, Theoretical

Based on a theme provided by the exam board, you will compare two artists and justify your reasons for recommending them based on the theme.

Unit 2

External Controlled Assessment-Thematic, Practical

Based on a theme provided by the exam board, you will create evidence to visually communicate how you have responded.

Unit 1

Year One

Project 1- Internal Thematic

A project where you will use fine art materials, techniques and processes to produce evidence based on a theme.

Units 4 & 12

Project 1- Internal Thematic

A project where you will use fine art materials, techniques and processes to produce evidence based on a theme.

Unit 12

External Controlled Assessment-Thematic, Practical

Based on a theme provided by the exam board, you will create evidence to visually communicate how you have responded.

Unit 1

Year One

Two-years= One A-Level

Post-16 Study

Two-years= One A-Level

Post-16 Study