

Week 1



Where is Russia and what is it like?

Russia is located:

- in the Northern Hemisphere.
- It is the largest country on Earth, covering 11% of the world's landmass
- Russia extends over Europe and Asia.



Russia's population:

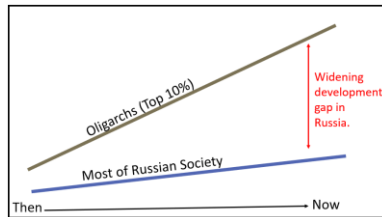
- Russia has a population of approximately 140 million people (about the same as the UK and Germany combined).
- As it is such a large country, this makes its population density very low.

About Russia:

- Russia is currently at war with Ukraine (although many Russian people disagree with the war).
- Russia is an MIC (middle income country).
- The capital of Russia is Moscow.

Russia's development gap

Russia's development gap is increasing; this means that the gap between the country's richest and poorest people is growing.



One reason for this is that 10% of the population control most of the wealth in the country. These people known as oligarchs. They quite often are corrupt individuals that grow their wealth through dishonest means. This has led too Russia being regarded as a very corrupt country with a corruption perception index of 23 (0 is the worst, 100 is the best).

Week 4

Russian resources: is Russia self-sufficient?

Russia has a variety of resources including a large share of the world's fresh water, oil, coal, iron, diamonds and gold. Russia exports these resources to make another valuable resource: money.

Despite being well resourced in many valuable exports, Russia does not have the best climate for farming. This means that Russia as to import a lot of its meat, fruit and vegetables from other countries. Therefore, Russia is **not self-sufficient**; it relies of trading with other countries to meet its needs.

Some tribes within Russia are more self-sufficient than the rest of the population.

The Nenet Tribe in Northern Siberia are reindeer herders. They are nomadic (they move from place to place) and the collect resources like wood in each new place. The Nenet tribe mainly rely on their herds for meat, and they use the reindeer bones and skin to make their clothes and shelter.



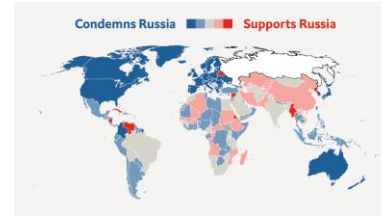
The Nenet tribe does trade some of their resources to buy luxuries such as fuel and weather-proof gear, so it loses some of its self sufficiency.

Self-sufficiency is important for countries as it means that they do not have to rely on trade from other countries, which can be blocked by embargos. A country is more stable when it is more self-sufficient.

Week 2

Russian allies and enemies

When Russia declared war on Ukraine in 2022, the world was divided into those that support Russia and those that are against Russia. There are many reasons why countries support Russia despite it being the aggressor. Some of these are explained below.



From 2011 -2019 **Syria** had a civil war. The Syrian government lost control of the situation and needed help. Russia was one of the countries that came to the Syrian governments rescue.

Russia did not always look the way it does today. Before it as the country of Russia we know today, it was the Soviet USSR (1917-1991) and before that the Russian Empire. **Belarus** and **Kazakhstan** where part of the Russian Empire and therefore still share a language with Russian.



Countries aim to develop through growing their wealth. One way they do this is trading. Russia exports many goods to **China** as well as buying many of their goods. **Iran** also does a lot of trade with Russia. These countries support Russia to protect trade deals

In 2019, Russia agreed to wipe off most of the debt than many African countries owed it that were struggling to pay it back. **Angola** and **Eritrea** are two countries that owed Russia a lot of money. This debt relief has really helped those countries out.

Week 3

Harsh areas of Russia

Russia is a large country that spans across numerous climates. The lifestyles and statistics of these areas are a reflection of the temperature and resources.

Areas can be assessed using a number of factors:	Russian average
• Life expectancy	71.34 Years
• Average winter temperature	-4°
• Average summer temperature	23
• Number of cities	4
• Risk of exposure	Moderate
• Economic contribution	11%
• Population density	9 per km ²



Week 6

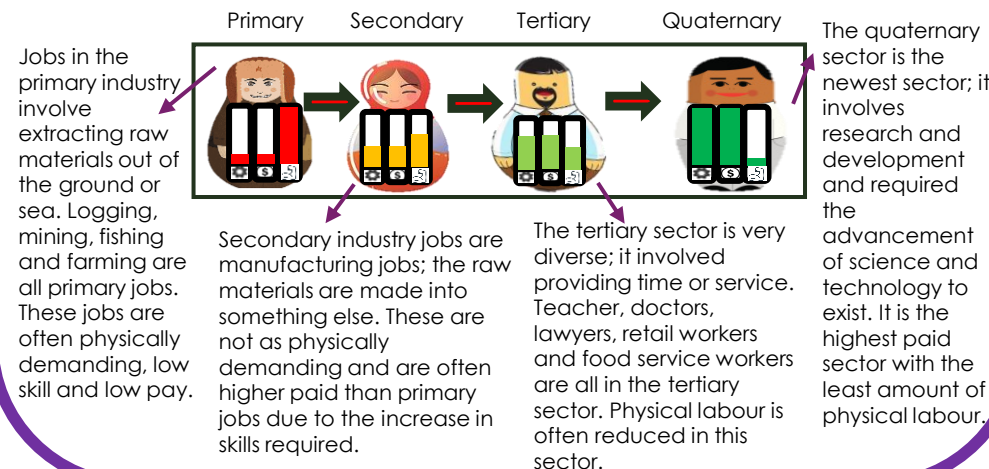
Revision of map and graph skills and their practical application.

Year 9 Geography: Russia

Week 5

Russia's manufacturing and exports

Russia uses its many resources to create employment for its population. People work in the 4 sectors of industry; primary, secondary, tertiary and quaternary. The jobs in each industry require different skills and have different pay. Countries require people working in all industry sectors but as middle-income country that is growing and on the cusp of being a high-income country, Russia is growing its percentage of tertiary and quaternary employment.



Resources can be...

- Consumed (used)
- Traded (sold)
- Stockpiled (stored)
- Or manufactured (Made into something else)

Key words:

1. **Population density** - The number of people who live within 1km².
2. **Oligarch** - A very rich business leader with a great deal of political influence (possibly corrupt).
3. **Allies** - Countries that support each other economically and politically (friends)
4. **Debt reduction** - To take action to make the amount a person or country owes get smaller.
5. **Risk of exposure** - likelihood of being exposed to something potentially harmful (death by freezing)
6. **Economic contribution**- the value of resources (like money, goods, and services) provided by an area that benefits the economy.
7. **Self-sufficient** – a country that can produce everything it needs without having to trade with other countries.
8. **Embargo** – an official ban on trade with a particular country.
9. **Industry sectors** – Categories of employment that group businesses that share activities, products or services.
10. **Manufacturing** - Making products out of other materials.

Week 1

Questions	Answers
Describe Russia's population density.	Russia's population density is low over all as it is such a large country. It does have areas of higher and lower densities depending on temperature and access.
What is the capital of Russia?	The capital of Russia is Moscow.
Explain why there is a widening development gap in Russia.	The development gap in Russia is widening due to a small percentage of the population that hold a very large percentage of the wealth, leaving very little for the remaining growing population.
Why is Russia seen as a country with high corruption?	Russia consider Russia a country with high corruption due to oligarchs acquiring wealth through sometimes illegal channels and misusing the funds.
What is the physical and human Geography that make up Russia?	The physical geography of Russia; mainly its climate dictates where humans are able to settle, significantly influencing its human geography.

Week 2

Questions	Answers
Which country did Russia declare war on in 2022?	Russia declared war on Ukraine in 2022.
What is an ally?	An ally is a 'friend' of a country. Allies often have strong trade links or political similarities.
Why have China and Iran remained allies with Russia throughout the war?	China and Iran have strong trade links with Russia. The countries rely on importing and exporting resources to keep their economies steady.
Which two countries are allies of Russia because of shared history?	Belarus and Kazakhstan were both part of the Soviet Union and the Russian Empire in the past and there for have shared history with Russia and still share a language.
What is the physical and human Geography that make up Russia?	Russia's rich political history has impacted on its allies, wealth and settlements which is still evident today.

Week 3

Questions	Answers
Why is life expectancy a good indicator of development?	Life expectancy is a good development indicator because it is reflective of the quality and access to healthcare in an area.
Where are most Russian cities located?	Many Russian cities are located in the European part of Russia, in the west of the country.
What factors contribute to the risk of exposure?	Freezing temperatures and lack of shelter increase the risk of exposure.
Why will oil-rich areas have a high economic contribution?	Oil-rich areas contribute highly to Russia's economy due to the export of oil generating a lot of income.
What is the physical and human Geography that make up Russia?	The harsh climate and access to remote areas impacts on development in Russia, as it does across the world.

Year 9 Geography: Russia

Week 4

Questions	Answers
Name three resources that Russia has a large amount of.	Russia has large amounts of fresh water, oil and diamonds.
How does Russia make money from its resources?	Russia exports many of its resources to make money. Its trade links forged through its exports also strengthens political relationships as well.
What resources does Russia need to import that lowers its self-sufficiency?	Although Russia has many valuable resources, its harsh climate makes farming very challenging. Russia therefore has to import meat, fruit and vegetables to support the needs of its population.
How does the Nenets tribe achieve near full self-sufficiency?	The Nenets tribe sustains itself by herding reindeer which they use for meat, shelter and clothing. They are nomadic; they move from place to place collecting wood.
What is the physical and human Geography that make up Russia?	The physical resources of Russia make it one of the leading exporters of fresh water (until its war with Ukraine).

Week 5

Questions	Answers
How can resources be used?	Resources can be; consumed (used), traded (sold), stockpiled (stored) or manufactured (made into something else).
Define primary industry.	Primary industries are industries which collect raw materials such as; farming, logging, oil rigging, mining, quarrying etc.
Why are some tertiary jobs more well paid than primary and secondary jobs?	Some tertiary industry jobs, like medical care or law, are more well paid than jobs in the primary jobs because the education and skill required in those fields are compensated for in their pay.
Why is the quaternary industry newer than the other industry sectors?	The quaternary sector include of innovation, research and development. These areas rely on the advancement of science and technology, fields that have only recently be developed.
What is the physical and human Geography that make up Russia?	The change shift in industry sectors moves development forward; Russia briefly gained HIC status before its war with Ukraine, which reduced its GDP, reducing back to an MIC.

Key words:

- Population density** - The number of people who live within 1km².
- Oligarch** - A very rich business leader with a great deal of political influence (possibly corrupt).
- Allies** - Countries that support each other economically and politically (friends)
- Debt reduction** - To take action to make the amount a person or country owes get smaller.
- Risk of exposure** - likelihood of being exposed to something potentially harmful (death by freezing)
- Economic contribution**- the value of resources (like money, goods, and services) provided by an area that benefits the economy.
- Self-sufficient** - a country that can produce everything it needs without having to trade with other countries.
- Embargo** - an official ban on trade with a particular country.
- Industry sectors** - Categories of employment that group businesses that share activities, products or services.
- Manufacturing** - Making products out of other materials.